



**LONDON  
SPORT**

**Supporting schools to  
provide community access**



# THE BACKGROUND

## London Sport's aim: Improve community access to school facilities

1. To support the schools to open-up their sports facilities, to broaden the offer of extra-curricular and out of school hours sporting and physical activities available to pupils and the wider community (after school, weekends and school holidays).
2. To ensure that open facility access is being supported by a strong and varied offer of sport and physical activity that appeals to young people in the schools and communities being targeted.
3. To work with schools and providers to convene and share best practices for wider activation

## Project Details:

- 3 phases of funding
- Actively working with 14 schools across 11 boroughs
- Supported a further 8 schools with other funds and advice



# PHASE 1 - CROYDON

In Phase 1, school selection was based on opportunity (where there is an appetite from the school for such a project) and need (based on our insight mapping using consolidated data sets including National Child Weight Measurement (NCMP), Indices of Deprivation and the Active Lives for Children and Young People (CYP) survey).

**Borough: Croydon**

**Project phase: #1**

**Number of schools involved: 3**

## School profiles:

| ABOUT THE SCHOOL |                        |
|------------------|------------------------|
| Name of school   | Riddlesdown Collegiate |
| Local Authority  | Croydon                |
| School Phase     | Secondary              |
| Type of school   | Free school            |
| Locality type    | Urban                  |
| Ofsted rating    | Outstanding            |

| ABOUT THE SCHOOL |                     |
|------------------|---------------------|
| Name of school   | Oasis, Shirley Park |
| Local Authority  | Croydon             |
| School Phase     | Secondary           |
| Type of school   | MAT                 |
| Locality type    | Urban               |
| Ofsted rating    | Outstanding         |

| ABOUT THE SCHOOL |             |
|------------------|-------------|
| Name of school   | Coombe Wood |
| Local Authority  | Croydon     |
| School Phase     | Secondary   |
| Type of school   | Free school |
| Locality type    | Urban       |
| Ofsted rating    |             |

# The focus for the Croydon schools:

All three schools were working towards the same overall objective of this project which was to improve/open up community access to school facilities beyond school hours.

Each school, however, had a unique focus for their school, specifically:

## Riddlesdown Collegiate:

To develop the school as a local hub that provided opportunities for the community as well as pupils and selected groups, with a strong focus on women and girls.

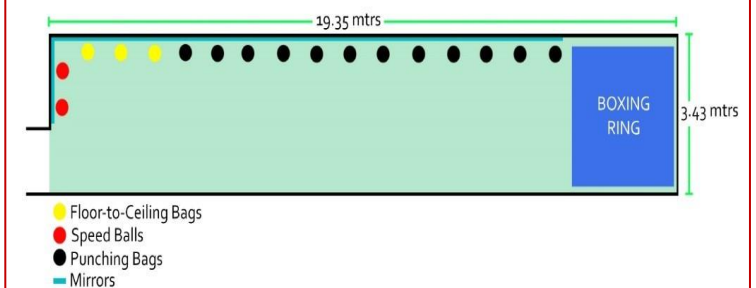


**Coombe Wood:** To test out their new business model *The Coombe Wood Sports Model* which focuses on specialising in five major sports. This model was built around the concept less is more and depth before breadth.

This school was unique in that it was a brand new school, with facilities still being built (left), with a completion date of February 2021.

**Oasis Shirley:** To build a Community Boxing Hub as a result of conversations and extensive surveys with the youth voice.

Mezzanine Area for Boxing Gym





# SUPPORT PROVIDED BY LONDON SPORT:

1) Communicated frequently with the schools via email and Zoom calls

2) Created a Community of Practice event to share knowledge

3) Linked the schools to additional physical activity providers

4) Provided guidance on how to listen to the local community and youth voices

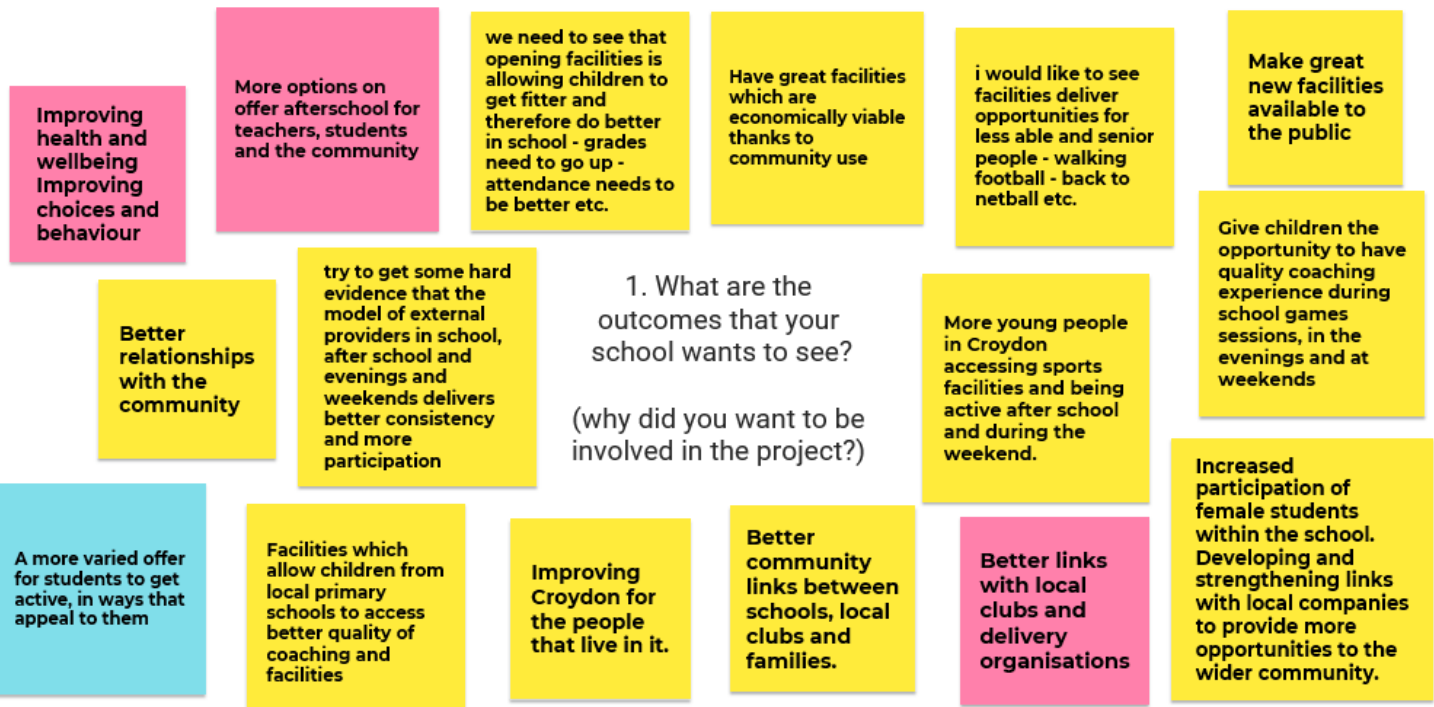
5) Provided low-level funding to help prepare the school for delivery

6) Worked with the schools to create a survey for data collection

# COMMUNITY OF PRACTICE:

Feedback from the three schools revealed that the support the schools found to be most beneficial was the creation of a community of practice between the schools. This provided them with the opportunity to share and challenge each other's ideas. London Sport arranged this by scheduling a Jamboard session:

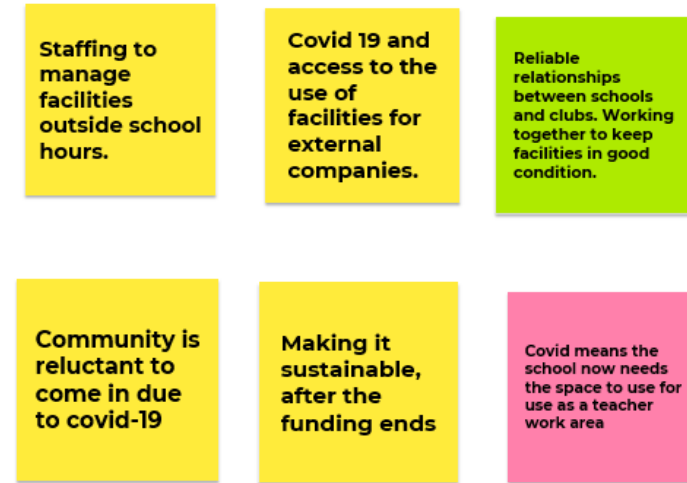
The aim of this project is to provide funding so that more secondary schools can broaden community access to their schools sporting facilities



## 3. What are the potential solutions?



## 2. What are the barriers to achieving this?





## OUTCOMES:

- The importance of opportunity and school buy-in - it was crucial to have a member of staff at the school who really bought into our aims.
- Inviting schools to 'opt-in' to the project indicates they are enthusiastic and ready for the project. This led to significant recruitment success in Phase 2 and Phase 3.
- Creating and facilitating a community of practice is very beneficial, as it provides schools with an invaluable opportunity to learn from each other.
- Commissioning funding in two parts (50% at the commencement and 50% at the conclusion of the project) helped London Sport support the schools throughout the project.
- Schools were excited by the opportunity to build community cohesion and engagement rather than income generation.
- Providing some low level funding to kick start activity was crucial.
- Young people and the local community need to be consulted with throughout
- Facilities do not need to be outstanding, they just need to provide a safe place to be active.



## WHAT COMES NEXT:

- School surveys will be created for data gathering and project monitoring
- London Sport will continue to build on the excellent school relationships that have been established.
- London Sport will work with the schools in other areas identified through this project.

### Contact Us

For more information contact [gary.palmer@londonsport.org](mailto:gary.palmer@londonsport.org)



The logo consists of a white shield-like shape with a pointed bottom, centered on a red background. Inside the shield, the words "LONDON" and "SPORT" are stacked vertically in a bold, red, sans-serif font.

**LONDON  
SPORT**

[londonsport.org](https://londonsport.org) | [@londonsport](https://twitter.com/londonsport) | [#MostActiveCity](https://twitter.com/hashtag/MostActiveCity)