



**Elemental**

**Using physical activity open data in referral setting**

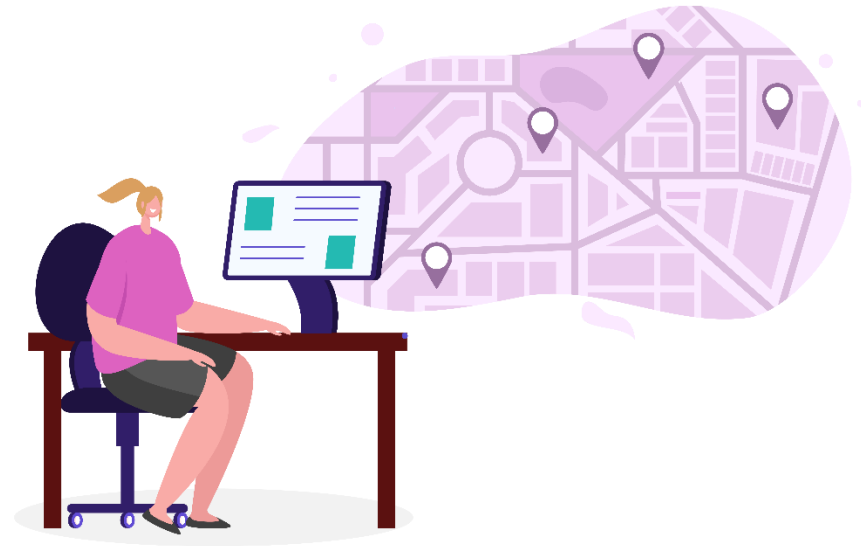
SUPPORTED BY  
**MAYOR OF LONDON**



# Overview

Elemental set out to look at several different developments, using open data, which could make it easier for link workers to refer a service user to a physical activity session which is relevant to their needs. The developments Elemental worked on were:

- 1) Integrating OpenActive open data feeds into their system and then display trusted sessions to link workers
- 2) Understanding which filters are most effective in matching the needs of a service user with the physical activity opportunities available.



# 1) OpenActive integration



Elemental were able to successfully integrate OpenActive open data feeds into their platform. This was despite their being fundamental differences between the Elemental platform and the OpenActive standards; the Elemental platform displays the provider first, whereas the OpenActive standards display the session first. To display this data, Elemental adjusted their current directory of services to include a new tab which would only include physical activity sessions from the OpenActive open data feeds.

Feedback from the link workers at Enable Leisure & Culture in Wandsworth was positive, with one link worker stating *“This would have been handy at the start of our journey with Elemental”*. There was a consensus that if the OpenActive open data was part of their system setup they would use it.

# 1) OpenActive integration



The link workers stated that having updated and accurate physical activity data was very appealing. All the link workers agreed that the integration with OpenActive open data feeds would reduce the amount of internet research they would need to do to find physical activity sessions not currently listed in their directory of services. They also agreed that due to this new integration functioning the same as their current directory of services, they could begin using this service immediately without the need for additional training.

## **Trusted sessions**

Elemental were unable to display 'trusted' opportunities to the link workers during the project timeframe, however, the link workers were very keen on this idea as they felt it would really enhance the system.

## 2) Filtering sessions



Elemental were able to implement filtering the OpenActive open data by cost, gender and virtual/in person. The link workers at Enable also stated that they would like to be able to filter by the age appropriateness of a session, venue amenities (e.g., toilets, changing rooms etc.) and outdoor/indoor sessions.

The link workers at Enable also stated that they wouldn't consider referring a service user to a sessions outside of a 3 mile radius, however Elemental's current implementation has a hardcoded radius of 25km, so this is something they will be looking at developing going forward.

# Elemental

*"The funding from the London Sport project enabled us to further develop our Elemental Directory of Services. This project has enabled us to work with customers to ensure accurate and up-to-date data relating to physical activity opportunities is available to social prescribers. This will support social prescribers to connect citizens to the physical activity opportunities in their local community."*

Helen McPeake, Elemental

To take a look at Elementals platform and view some of the developments just mentioned, [please see this short video](#)



# Find out more

If you would like to hear more about the 'Using physical activity open data in referral settings' project, please contact [oliver.sisman@londonsport.org](mailto:oliver.sisman@londonsport.org)

If you would like to learn more about Elemental, please contact [info@elementalsoftware.co](mailto:info@elementalsoftware.co)

